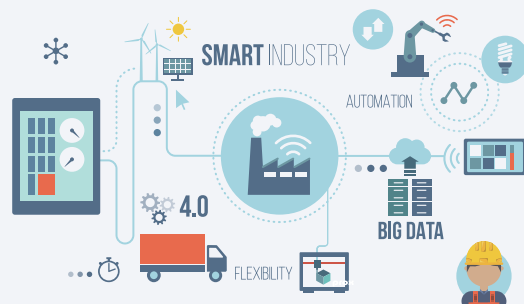


Rugged Tablet



Model		MH-T01T	MH-0616
QR Code			
Pictures			
DISPLAY	Size	10.1" IPS	6" IPS
	Resolution	1920 x 1200 pixels	1280 x 720 pixels
	Brightness	1000 nits	500 nits
	Lifetime	30,000 hours	30,000 hours
	Touch	Corning Gorilla Glass and Anti-Fingerprint P-CAP Multi-Touch (i), Optical Bonding with WUXGA LCD	Corning Gorilla Glass and Anti-Fingerprint P-CAP Multi-Touch (i), Optical Bonding with HD LCD
O.S. Support		Windows 11 IoT GAC / Windows 10 IoT LTSC	Android 10
CPU Support		Intel® 11th Gen. Core™ i7 / i5 / i3 / Celeron® Processor, Max. 4.4 GHz	Qualcomm S660 octacore 64-bit processor, Max. 2.2 GHz
Memory		1 x 8 GB DDR4 (Max. 16 GB)	4 + 64 GB eMCP
Storage		1 x 256 GB M.2 NVMe SSD (Max. 1 TB)	
Audio (Speaker/Mic)		1 x 2W / 1 x Mic	1 x 0.8 W / 1 x Mic
WiFi + BT		WiFi 6E + BT 5.3	WiFi 5 + BT 5.0
Battery Capacity		10.8 V / 4600 mAh / 49.6 Wh (Dual-Main Battery for Hot-swap)	3.85 V / 4380 mAh / 16.8 Wh
Battery Operation		8 hours	10 hours
BIOS		AMI	—
G-Sensor + Gyroscope		1	1
Ambient Light Sensor		1	1
Vibrator		1	1
Buttons		6 (ii)	6 (iii)
Security		TPM 2.0 / K-Lock	—
I/O PORTS	USB	1 x USB Type C (for Fast Charging / Data Transmission / Display) 2 x USB 3.0 Type A (iv)	1 x USB Type C (for Fast Charging / Data Transmission)
	DC Jack	1	—
	Phone Jack	1	—
	SD / SIM	1 (Expansion Slot 1) / 1	1 / 1
	Cradle Connector	1 x POGO pin (for Charging / External Antenna)	1 x POGO pin (for Charging)
	Expansion Slot	2	—
	LAN / COM / HDMI	1 / 1 (Expansion Slot 1) / —	—
OPTIONAL DEVICE	Barcode Scanner	2D Barcode (Expansion Slot 1)	2D Barcode
	FF Front / AF Rear Camera	2 MP (Optional Windows Hello) / 8 MP with Flashlight	— / 13 MP with Flashlight
	3D Camera	1 (either)	1 (either)
	NFC / RFID	1 (either, Expansion Slot 1)	—
	MSR / Card Reader	1 (either, Expansion Slot 1)	—
	Payment Card Reader	—	1
	4G / 5G + GPS	5G / 4G module with GNSS	4G + GPS on board
ACCESSORIES	Fingerprint	1 (Expansion Slot 2)	—
	Lite Cradle / Vehicle Cradle	1 / 1	1 / —
	Battery Charger	2 bay	1 bay
	Hand Strap / Shoulder Strap	1 / 1	1 / 1
IP Rating		IP65 (Whole)	IP65 (Whole)
Drop Test		1.5 m (MIL-STD-810H)	1.2 m (MIL-STD-810H)
Operating Temp.		-10°C ~ 50°C (Battery mode) and -20°C ~ 60°C (AC mode)	-10°C ~ 50°C
Power Adaptor		19V / 3.42V / 65W for Tablet	QC 3.0 Type C 30W for Tablet and Charging Stand
Dimensions (W x H x D) mm		274 x 195 x 25.5 283 x 203 x 27.5 (with Rubber Corner)	89 x 168 x (19.1-21.1)
Weight (approx)		1.28 kg (Tablet only)	330 g (Tablet only)
Certifications		CE, FCC, PSE, TELEC	CE, FCC, PSE, TELEC

(i) Support Finger / Stylus / Raindrop / Glove

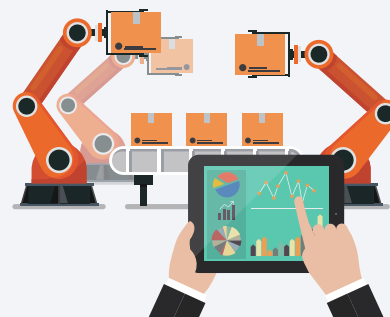
(ii) 1 x Power Button, 1 x Home Key, 2 x Function Key, 1 x Volume+, 1 x Volume-



(iii) 1 x Power Button, 1 x Function Key, 2 x Scan Buttons, 1 x Volume+, 1 x Volume-

(iv) One is on board and another is on Expansion Slot.

*All information contained in this document is subject to change without prior notice. Please log on www.protech.com.tw to acquire latest information.

Industrial Tablet







Model		MH-5752
QR Code		
Pictures		
DISPLAY	Size	7" IPS
	Resolution	800 x 1280 pixels
	Brightness	400 nits
	Lifetime	30,000 hours
	Touch	Anti-Fingerprint P-CAP Optical Bonding with LCD Panel
O.S. Support		Windows 10 IoT LTSC 2019 64 bit
CPU Support		Intel® Atom™ x5-Z8550 Quad Core™ Max. 2.4 GHz
Memory		4 GB LPDDR3
Storage		64 GB eMMC
Audio (Speaker/Mic)		1 x 1W / -
WiFi + BT		WiFi 4 + BT 4.0
Battery Capacity		3.8 V / 7400 mAh / 28.1 Wh
Battery Operation		8 hours
BIOS		Insyde
G-Sensor + Gyroscope		1
Ambient Light Sensor		1
Vibrator		--
Buttons		2
Security		--
I/O PORTS	USB	1 x USB Type C
	DC Jack	--
	Phone Jack	--
	SD / SIM	1 / 1
	Cradle Connector	1 x POGO pin
	Expansion Slot	1
	LAN / COM / HDMI	--
OPTIONAL DEVICE	Barcode Scanner	2D Barcode
	FF Front / AF Rear Camera	- / 8 MP
	3D Camera	--
	NFC / RFID	1 / -
	MSR / Card Reader	- / -
	Payment Card Reader	--
	4G / 5G + GPS	4G + GPS module
ACCESSORIES	Fingerprint	--
	Lite Cradle / Vehicle Cradle	1 / -
	Battery Charger	2 bay / 4 bay
	Hand Strap / Shoulder Strap	1 / 1
IP Rating		IP54 (front Panel)
Drop Test		1.2 m
Operating Temp.		0°C ~ 40°C
Power Adaptor		Pad with 5V / 3A / 15W Cradle with 12V / 5A / 60W
Dimensions (W x H x D) mm		120.6 x 192.6 x (21 - 25.3)
Weight (approx)		499 g (Tablet only)
Certifications		CE, FCC, PSE, TELEC

*All information contained in this document is subject to change without prior notice. Please log on www.protech.com.tw to acquire latest information.

Industrial Tablet



Model		MH-5102	MH-5108
QR Code			
Pictures			
DISPLAY	Size	10.1" IPS	10.1" IPS
	Resolution	1920 x 1200 pixels	1920 x 1200 pixels
	Brightness	450 nits	450 nits
	Lifetime	30,000 hours	30,000 hours
	Touch	Anti-Fingerprint P-CAP Optical Bonding with LCD Panel	Anti-Fingerprint P-CAP Optical Bonding with LCD Panel
O.S. Support		Windows 10 IoT LTSC 2019 64 bit	Android 9
CPU Support		Intel® Atom™ x5-Z8550 Quad Core™ Max. 2.4 GHz	Qualcomm S450 octacore 64-bit processor, Max. 1.8 GHz
Memory		4 GB / 8 GB LPDDR3	2 GB + 16 GB eMCP
Storage		64 GB / 128 GB eMMC	
Audio (Speaker/Mic)		1 x 1W / –	1 x 1W / –
WiFi + BT		WiFi 5 + BT 4.1	WiFi 5 + BT 4.2
Battery Capacity		3.6 V / 7900 mAh / 28.4 Wh	3.8 V / 7400 mAh / 28.1 Wh
Battery Operation		8 hours	8 hours
BIOS		Insyde	–
G-Sensor + Gyroscope		1	1
Ambient Light Sensor		1	1
Vibrator		–	–
Buttons		3	2
Security		TPM 2.0 / –	–
I/O PORTS	USB	1 x USB 3.0 Type A	1 x USB Type C
	DC Jack	1	1
	Phone Jack	1	1
	SD / SIM	1 / 1	1 / 1
	Cradle Connector	1 x POGO pin	1 x POGO pin
	Expansion Slot	–	1
	LAN / COM / HDMI	–	–
OPTIONAL DEVICE	Barcode Scanner	2D Barcode	2D Barcode
	FF Front / AF Rear Camera	5 MP / 5 MP	8 MP / 8 MP
	3D Camera	–	–
	NFC / RFID	1 / –	1 / –
	MSR / Card Reader	1 / 1	– / –
	Payment Card Reader	1	1
	4G / 5G + GPS	4G + GPS module	4G + GPS on board
	Fingerprint	–	–
ACCESSORIES	Lite Cradle / Vehicle Cradle	1 / –	1 / –
	Battery Charger	2 bay / 4 bay	–
	Hand Strap / Shoulder Strap	1 / 1	1 / 1
IP Rating		IP54 (front Panel)	IP65 (front Panel)
Drop Test		1.2 m	1.2 m
Operating Temp.		0°C ~ 40°C	0°C ~ 40°C
Power Adaptor		Pad with 12V / 2A / 24W 24V / 1A / 24W Cradle with 12V / 5A / 60W	Pad with 12V / 2A / 24W
Dimensions (W x H x D) mm		267.84 x 188.5 x 25.2	257 x 169 x 17
Weight (approx)		838 g (Tablet only)	700 g (Tablet only)
Certifications		CE, FCC, PSE, TELEC	CE, FCC, PSE, TELEC

*All information contained in this document is subject to change without prior notice. Please log on www.protech.com.tw to acquire latest information.