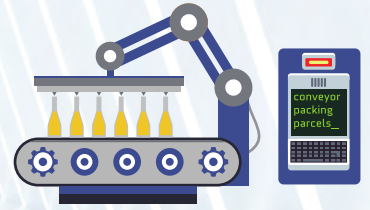


Remote I/O Module Selection Guide



Model		SI-W109	SI-W309	SI-W509	SI-W709
QR Code					
Pictures					
SYSTEM	Processor	8-bit Micro Controller			
	Memory	2 KB on-chip			
	Storage	64KB on-chip flash			
	Communications	RS-485 (D+, D-)			
	Firmware	Protech Firmware			
I/O PORTS	RS-485 (D+, D-)	1 channel			
	Analog Input	4 channels	--	--	--
	Analog Output	2 channels	--	--	--
	Digital Input	4 channels	8 channels	5 channels	--
	Digital Output	4 channels	8 channels	--	--
	Relay Output	--	--	6 channels	--
	Thermocouple Input	--	--	--	8 channels
Protocol Support		Modbus RTU			
Enclosure		Plastic			
Mount Type		DIN-Rail, Wall Mount			
Power		DC In 9V~50V			
Dimensions (W x H x D) mm		90 x 115 x 29			
Weight (approx)		220 g			
Certifications		CE, FCC			

*All information contained in this document is subject to change without prior notice. Please log on www.protech.com.tw to acquire latest information.