

Chapter 8

Industrial Panel PC



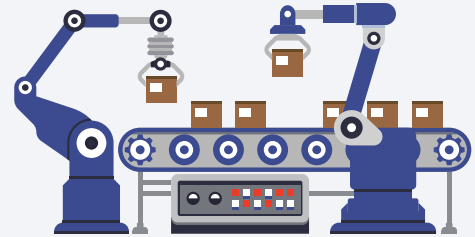
Stainless Steel Panel PC



		21.5" High End		21.5" Entry	17" High End	
Model		SP-S218	SP-S214	SP-S211	SP-S178	SP-S174
QR Code						
Pictures						
Panel Spec	Display Type	FHD	FHD	FHD	SXGA	SXGA
	Max. Resolution	1920 x 1080	1920 x 1080	1920 x 1080	1280 x 1024	1280 x 1024
	Pixel Pitch	0.248 x 0.248	0.248 x 0.248	0.248 x 0.248	0.264 x 0.264	0.264 x 0.264
	Brightness (cd/m ²)	350	350	350 / 1600	350	350
	Response Time (Tr + Td)	22 ms	22 ms	22 ms	30 ms	30 ms
Viewing Angle (up / down / left / right)		89/89/89/89	89/89/89/89	89/89/89/89	80/80/85/85	80/80/85/85
Processor		Intel® 12th/13th/14th Gen. Core™ i3/i5/i7/i9/ Pentium® Celeron®, up to 35W	Intel® Core™ i7-7700T Core™ i5-7500T Core™ i3-7101TE Celeron® G3930TE	Intel® Celeron® J3455 4C 2.3 GHz	Intel® 12th/13th/14th Gen. Core™ i3/i5/i7/i9/ Pentium® Celeron®, up to 35W	Intel® Core™ i7-7700T Core™ i5-7500T Core™ i3-7101TE Celeron® G3930TE
Chipset		Intel® Q670E/H610E	Intel® Q170/H110	Intel® SoC	Intel® Q670E/H610E	Intel® Q170/H110
Max. System Memory		64GB DDR5	32GB DDR4 SO-DIMM	8GB DDR3L	64GB DDR5	32GB DDR4 SO-DIMM
I/O PORTS	Display	1 x DP 1 x HDMI®	2 x DVI-D	1 x DVI-D 1 x HDMI®	1 x DP 1 x HDMI®	2 x DVI-D
	USB	4 x USB 3.0	4 x USB 3.0 4 x USB 2.0	3 x USB 3.0	4 x USB 3.0	4 x USB 3.0 4 x USB 2.0
	Audio Line In / Line Out / Mic In	0 / 1 / 1	1 / 1 / 1	-- / 1 / 1	0 / 1 / 1	1 / 1 / 1
	LAN	2 + 2 (optional)	2	2	2 + 2 (optional)	2
	Serial Ports	4	4	2	4	4
	Parallel Port	--	1	--	--	1
	Digital I/O Port	8in / 8out (option)	--	--	8in / 8out (option)	--
	Keyboard / Mouse	--	--	--	--	--
Fan		Fanless	Fan	Fanless	Fanless	Fan
Drive Bays		2 x 2.5" SATAIII HDD	2 x 2.5" SATAIII HDD	1 x 2.5" SATAIII HDD	2 x 2.5" SATAIII SSD	2 x 2.5" SATAIII HDD
Touchscreen		Projected capacitive touch	Projected capacitive touch	Projected capacitive touch	Projected capacitive touch / 5W analog resistive	Projected capacitive touch / 5W analog resistive
Construction		Electro galvanized steel chassis Stainless steel front bezel	Electro galvanized steel chassis Stainless steel front bezel	Electro galvanized steel chassis Stainless steel front bezel	Electro galvanized steel chassis Stainless steel front bezel	Electro galvanized steel chassis Stainless steel front bezel
Waterproof Level		IP65 (for front panel only)	IP65 (for front panel only)	IP65 (for front panel only)	IP65 (for front panel only)	IP65 (for front panel only)
Wall Mount Type		VESA 100	VESA 75/100	VESA 100	VESA 100	VESA 75/100
Power		DC In 9V~36V	AC In 100V~240V 50Hz~60Hz	DC In 9V~36V	DC In 9V~36V	AC In 100V~240V 50Hz~60Hz
Dimensions (W x H x D) mm		TBD	585 x 377 x 107	585 x 377 x 92	TBD	436 x 368 x 103
System Weight		TBD	11.8 kg	10 kg	TBD	9.1 kg
Operating System		Windows 10 IoT LTSC 2021 64 bit/ Windows 11 IoT Enterprise (GAC)/ Ubuntu 22.04 (kernel: 5.15)	Windows 10 IoT LTSC 2019	Windows 10 IoT LTSC 2019 / Ubuntu LTS 16.04	Windows 10 IoT LTSC 2021 64 bit/ Windows 11 IoT Enterprise (GAC)/ Ubuntu 22.04 (kernel: 5.15)	Windows 10 IoT LTSC 2019
Certifications		CE, FCC	CE, FCC	CE, FCC	CE, FCC	CE, FCC

*All information contained in this document is subject to change without prior notice. Please log on www.protech.com.tw to acquire latest information.

Stainless Steel Panel PC



		17" Entry	15.6" High End	15" High End		15" Entry
Model		SP-7157	SP-S168	SP-S158	SP-S154	SP-7155
QR Code						
Pictures			NEW	NEW		
Panel Spec	Display Type	SXGA	HD/FHD	XGA	XGA	XGA
	Max. Resolution	1280 x 1024	1366 x 768/1920 x 1080	1024 x 768	1024 x 768	1024 x 768
	Pixel Pitch	0.264 x 0.264	0.252 x 0.252/ 0.1795 x 0.1795	0.297 x 0.297	0.297 x 0.297	0.297 x 0.297
	Brightness (cd/m ²)	350	400/500	450	450	400
	Response Time (Tr + Td)	30 ms	8 ms/25 ms	8 ms	8 ms	8 ms
Viewing Angle (up / down / left / right)		80/80/85/85	80/80/85/85 89/89/89/89	70/80/80/80	70/80/80/80	80/80/80/80
Processor		Intel® Celeron® N3350 2C 2.4 GHz Pentium® N4200 4C 2.5 GHz Celeron® J3455 4C 2.3 GHz Atom® x7 E3950 4C 1.8 GHz	Intel® 12th/13th/14th Gen. Core™ i3/i5/i7/i9/ Pentium® Celeron®, up to 35W	Intel® 12th/13th/14th Gen. Core™ i3/i5/i7/i9/ Pentium® Celeron®, up to 35W	Intel® Core™ i7-7700T Core™ i5-7500T Core™ i3-7101TE Celeron® G3930TE	Intel® Celeron® N3350 2C 2.4 GHz Pentium® N4200 4C 2.5 GHz Celeron® J3455 4C 2.3 GHz Atom® x7 E3950 4C 1.8 GHz
Chipset		Intel® SoC	Intel® Q670E/H610E	Intel® Q670E/H610E	Intel® Q170/H110	Intel® SoC
Max. System Memory		8GB DDR3L	64GB DDR5	64GB DDR5	32GB DDR4 SO-DIMM	8GB DDR3L
I/O PORTS	Display	1 x DVI-D 1 x HDMI®	1 x DP 1 x HDMI®	1 x DP 1 x HDMI®	2 x DVI-D	1 x DVI-D 1 x HDMI®
	USB	3 x USB 3.0	4 x USB 3.0	4 x USB 3.0	4 x USB 3.0 4 x USB 2.0	3 x USB 3.0
	Audio Line In / Line Out / Mic In	-- / 1 / 1	0 / 1 / 1	0 / 1 / 1	1 / 1 / 1	-- / 1 / 1
	LAN	2	2 + 2 (optional)	2 + 2 (optional)	2	2
	Serial Ports	2	4	4	4	2
	Parallel Port	--	--	--	1	--
	Digital I/O Port	--	8in / 8out (option)	8in / 8out (option)	--	--
	Keyboard / Mouse	--	--	--	--	--
Fan		Fanless	Fanless	Fanless	Fan	Fanless
Drive Bays		1 x 2.5" SATAIII HDD	2 x 2.5" SATAIII SSD	2 x 2.5" SATAIII SSD	2 x 2.5" SATAIII HDD	1 x 2.5" SATAIII HDD
Touchscreen		Projected capacitive touch / 5W analog resistive	Projected capacitive touch	Projected capacitive touch / 5W analog resistive	Projected capacitive touch / 5W analog resistive	Projected capacitive touch / 5W analog resistive
Construction		Electro galvanized steel chassis Stainless steel front bezel	Electro galvanized steel chassis Stainless steel front bezel	Electro galvanized steel chassis Aluminum front bezel	Electro galvanized steel chassis Stainless steel front bezel	Electro galvanized steel chassis Stainless steel front bezel
Waterproof Level		IP65 (for front panel only)	IP65 (for front panel only)	IP65 (for front panel only)	IP65 (for front panel only)	IP65 (for front panel only)
Wall Mount Type		VESA 100	VESA 100	VESA 100	VESA 75/100	VESA 100
Power		DC In 9V~36V	DC In 9V~36V	DC In 9V~36V	AC In 100V~240V 50Hz~60Hz	DC In 9V~36V
Dimensions (W x H x D) mm		436 x 368 x 87	TBD	TBD	408 x 320 x 98	408 x 320 x 82
System Weight		6.9 kg	TBD	TBD	8.1 kg	6.0 kg
Operating System		Windows 10 IoT LTSC 2019 / Ubuntu LTS 16.04	Windows 10 IoT LTSC 2021 64 bit/ Windows 11 IoT Enterprise (GAC)/ Ubuntu 22.04 (kernel: 5.15)	Windows 10 IoT LTSC 2019 / Ubuntu LTS 16.04	Windows 10 IoT LTSC 2019	Windows 10 IoT LTSC 2019 / Ubuntu LTS 16.04
Certifications		CE, FCC	CE, FCC	CE, FCC	CE, FCC	CE, FCC

*All information contained in this document is subject to change without prior notice. Please log on www.protech.com.tw to acquire latest information.

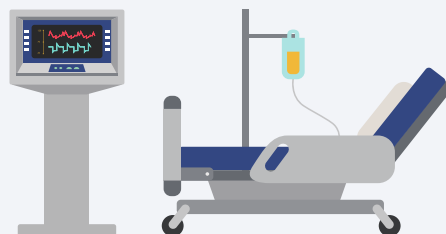
Aluminum Panel PC



		19" High End	19" Entry	17" High End	17" Entry
Model		SP-6269	SP-6159	SP-6567	SP-C172
QR Code					
Pictures					
Panel Spec	Display Type	SXGA	SXGA	XGA	SXGA
	Max. Resolution	1280 x 1024	1280 x 1024	1024 x 768	1280 x 1024
	Pixel Pitch	0.294 x 0.294	0.294 x 0.294	0.297 x 0.297	0.264 x 0.264
	Brightness (cd/m ²)	350	350	450	350
	Response Time (Tr + Td)	10 ms	10 ms	8 ms	30 ms
Viewing Angle (up / down / left / right)		80/80/85/85	80/80/85/85	70/80/80/80	80/80/85/85
Processor		Intel® Core™ i7-6700TE Core™ i5-6500TE Core™ i3-6100TE Pentium® G4400TE Celeron® G3900TE	Intel® Celeron® N3350 2C 2.4 GHz Pentium® N4200 4C 2.5 GHz Atom® x7 E3950 4C 2.0 GHz	Intel® Core™ i7-6700TE Core™ i5-6500TE Core™ i3-6100TE Pentium® G4400TE Celeron® G3900TE	Intel® Celeron® J6412 Atom® X6425RE
Chipset		Intel® Q170/H110	Intel® SoC	Intel® Q170/H110	--
Max. System Memory		32GB DDR4 SO-DIMM	8GB DDR3L	32GB DDR4 SO-DIMM	32GB DDR4
I/O PORTS	Display	1 x DVI-I	1 x DVI-D 1 x HDMI®	1 x DVI-I	1 x DP 1 x HDMI®
	USB	4 x USB 3.0	3 x USB 3.0	4 x USB 3.0	2 x USB 3.0 3 x USB 2.0
	Audio Line In / Line Out / Mic In	1 / 1 / 1	-- / 1 / 1	1 / 1 / 1	0 / 1 / 0
	LAN	2	2	2	2 x GbE or 4 x GbE (option, max. 2 x PoE)
	Serial Ports	4	2	4	1 or 2 (option)
	Parallel Port	--	--	--	--
	Digital I/O Port	8in / 8out	--	8in / 8out	6in / 6out
	Keyboard / Mouse	--	--	--	--
Fan		Fanless	Fanless	Fanless	Fanless
Drive Bays		2 x 2.5" SATAIII HDD 1 x CFast card on board	1 x 2.5" SATAIII HDD	2 x 2.5" SATAIII HDD 1 x CFast card on board	1 x 2.5" SATAIII SSD 1 x NVMe M.2 (2280)
Touchscreen		5W analog resistive	5W analog resistive	Projected capacitive touch / 5W analog resistive	Projected capacitive touch / 5W analog resistive
Construction		Electro galvanized steel chassis Aluminum front bezel	Electro galvanized steel chassis Aluminum front bezel	Electro galvanized steel chassis Aluminum front bezel	Electro galvanized steel chassis Aluminum front bezel
Waterproof Level		IP65 (for front panel only)	IP65 (for front panel only)	IP65 (for front panel only)	IP65 (for front panel only)
Wall Mount Type		VESA 100	VESA 100	VESA 100	VESA 75
Power		DC In 9V~36V	DC In 9V~36V	DC In 9V~36V	DC In +12V/+24V
Dimensions (W x H x D) mm		471 x 396 x 131	471 x 396 x 91	364 x 279 x 118	396 x 328 x 75
System Weight		11.5 kg	10.7 kg	10 kg	6.5 kg
Operating System		Windows 10 IoT LTSC 2019 / Windows 8.1 / Windows 7 / Ubuntu LTS 16.04	Windows 10 IoT LTSC 2019 / Ubuntu LTS 16.04	Windows 10 IoT LTSC 2019 / Ubuntu LTS 16.04	Windows 10 IoT LTSC / Windows 11 IoT Enterprise (GAC)
Certifications		CE, FCC	CE, FCC	CE, FCC	CE, FCC

*All information contained in this document is subject to change without prior notice. Please log on www.protech.com.tw to acquire latest information.

Aluminum Panel PC



		15" High End	15" Entry	12" Entry	10.4" Entry	8.4" Entry
Model		SP-6565	SP-C152	SP-C122	SP-C102	SP-C082
QR Code						
Pictures			NEW	NEW	NEW	NEW
Panel Spec	Display Type	XGA	SXGA	SXGA	SXGA	SXGA
	Max. Resolution	1024 x 768	1280 x 1024	1280 x 1024	1800 x 600	800 x 600
	Pixel Pitch	0.297 x 0.297	0.297 x 0.297	0.24 x 0.24	0.264 x 0.264	0.264 x 0.264
	Brightness (cd/m ²)	450	400	500	400	600
	Response Time (Tr + Td)	8 ms	8 ms	35 ms	35 ms	16 ms
Viewing Angle (up / down / left / right)		70/80/80/80	80/80/80/80	80/80/80/80	60/70/80/80	70/65/75/75
Processor		Intel® Core™ i7-6700TE Core™ i5-6500TE Core™ i3-6100TE Pentium® G4400TE Celeron® G3900TE	Intel® Celeron® J6412 Atom® X6425RE	Intel® Celeron® J6412 Atom® X6425RE	Intel® Celeron® J6412 Atom® X6425RE	Intel® Celeron® J6412 Atom® X6425RE
Chipset		Intel® Q170/H110	--	--	--	--
Max. System Memory		32GB DDR4 SO-DIMM	32GB DDR4	32GB DDR4	32GB DDR4	32GB DDR4
I/O PORTS	Display	1 x DVH	1 x DP 1 x HDMI®	1 x DP 1 x HDMI®	1 x DP 1 x HDMI®	1 x DP 1 x HDMI®
	USB	4 x USB 3.0	2 x USB 3.0 3 x USB 2.0	2 x USB 3.0 3 x USB 2.0	2 x USB 3.0 3 x USB 2.0	2 x USB 3.0 3 x USB 2.0
	Audio Line In / Line Out / Mic In	1 / 1 / 1	0 / 1 / 0	0 / 1 / 0	0 / 1 / 0	0 / 1 / 0
	LAN	2	2 x GbE or 4 x GbE (option, max. 2 x PoE)	2 x GbE or 4 x GbE (option, max. 2 x PoE)	2 x GbE or 4 x GbE (option, max. 2 x PoE)	2 x GbE or 4 x GbE (option, max. 2 x PoE)
	Serial Ports	4	1 or 2 (option)	1 or 2 (option)	1 or 2 (option)	1 or 2 (option)
	Parallel Port	--	--	--	--	--
	Digital I/O Port	8in / 8out	6in / 6out	6in / 6out	6in / 6out	6in / 6out
	Keyboard / Mouse	--	--	--	--	--
Fan		Fanless	Fanless	Fanless	Fanless	Fanless
Drive Bays		2 x 2.5" SATAIII HDD 1 x CFAST card on board	1 x 2.5" SATAIII SSD 1 x NVMe M.2 (2280)	1 x 2.5" SATAIII SSD 1 x NVMe M.2 (2280)	1 x 2.5" SATAIII SSD 1 x NVMe M.2 (2280)	1 x 2.5" SATAIII SSD 1 x NVMe M.2 (2280)
Touchscreen		Projected capacitive touch / 5W analog resistive	Projected capacitive touch / 5W analog resistive	5W analog resistive	Projected capacitive touch / 5W analog resistive	Projected capacitive touch / 5W analog resistive
Construction		Electro galvanized steel chassis Aluminum front bezel	Electro galvanized steel chassis Aluminum front bezel	Electro galvanized steel chassis Aluminum front bezel	Electro galvanized steel chassis Aluminum front bezel	Electro galvanized steel chassis Aluminum front bezel
Waterproof Level		IP65 (for front panel only)	IP65 (for front panel only)	IP65 (for front panel only)	IP65 (for front panel only)	IP65 (for front panel only)
Wall Mount Type		VESA 100	VESA 75	VESA 75	VESA 75	VESA 75
Power		DC In 9V~36V	DC In +12V/+24V	DC In +12V/+24V	DC In +12V/+24V	DC In +12V/+24V
Dimensions (W x H x D) mm		364 x 279 x 118	365 x 278 x 75	324 x 253 x 71	260 x 217 x 73	225 x 177 x 76
System Weight		10 kg	6 kg	3.55 kg	3 kg	2 kg
Operating System		Windows 10 IoT LTSC / Ubuntu LTS 16.04	Windows 10 IoT LTSC / Windows 11 IoT Enterprise (GAC)	Windows 10 IoT LTSC / Windows 11 IoT Enterprise (GAC)	Windows 10 IoT LTSC / Windows 11 IoT Enterprise (GAC)	Windows 10 IoT LTSC / Windows 11 IoT Enterprise (GAC)
Certifications		CE, FCC	CE, FCC	CE, FCC	CE, FCC	CE, FCC

*All information contained in this document is subject to change without prior notice. Please log on www.protech.com.tw to acquire latest information.