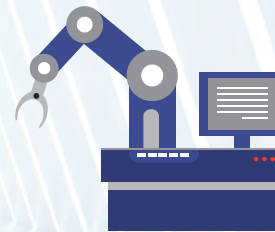


Industrial Monitor Selection Guide



Model		SP-C175	SP-C155	SP-C105	SP-C085
QR Code					
Pictures					
D I S P L A Y	Sizes	17"	15"	10.4"	8.4"
	Resolution	1280 x 1024 pixels	1024 x 768 pixels	800 x 600 pixels	800 x 600 pixels
	Brightness	350 nits	450 nits / 300 nits	450 nits	600 nits
	Lifetime	50,000 hours	50,000 hours	50,000 hours	30,000 hours
	Viewing Angle	Horizontal: -80°~80°, Vertical: -80°~70°			
Touch		P-CAP touch / Resistive touch			
I / O P O R T S	VGA	1			
	DVI	DVI-I cable (support DVI-D signal only)			
	USB	Type A x 1 for connecting touch			
	HDMI	1			
	DC In Jack	DC12V x 1			
OSD		Power Button x1, Auto x 1, Menu x 1, SEL+ x 1, SEL- x 1			
Stand-alone Stand		Option			
Wall-mounted Kit		Option			
IP Rating		IP65 (front Panel)			
Power Adaptor		12V/3.3A/40W			
Dimensions (W x H x D) mm		396 x 328 x 54	365 x 280 x 54	260 x 217 x 48	225 x 177 x 49
Weight		4.4 kg	3.5 kg	1.8 kg	1.4 kg
Operation Temp.		-20°C~60°C / 0°C~50°C			
Certifications		CE, FCC			

*All information contained in this document is subject to change without prior notice. Please log on www.protech.com.tw to acquire latest information.