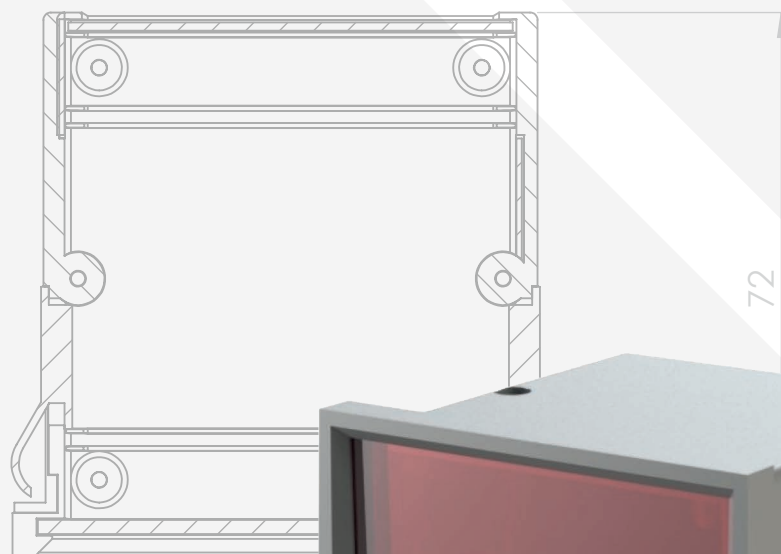
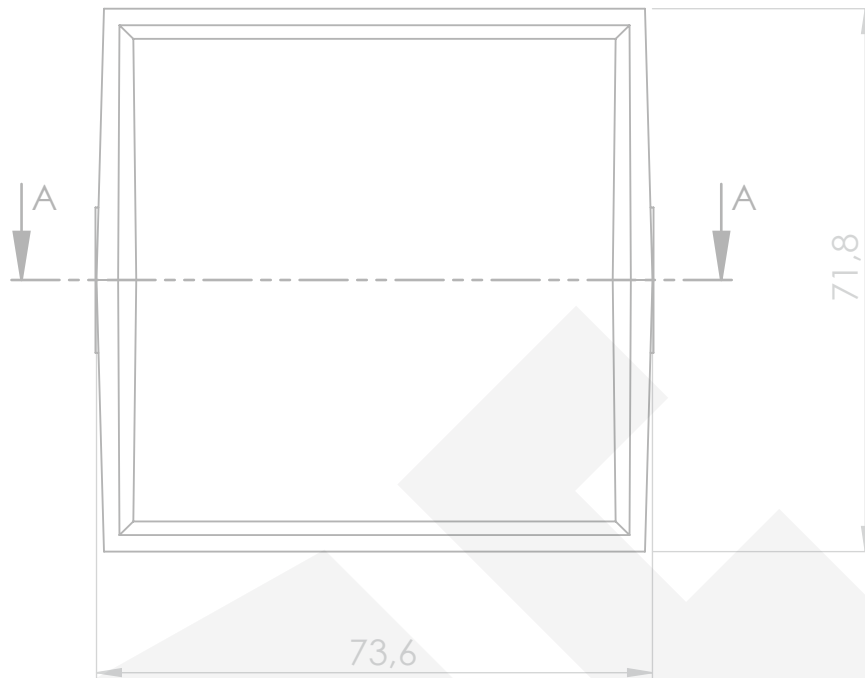
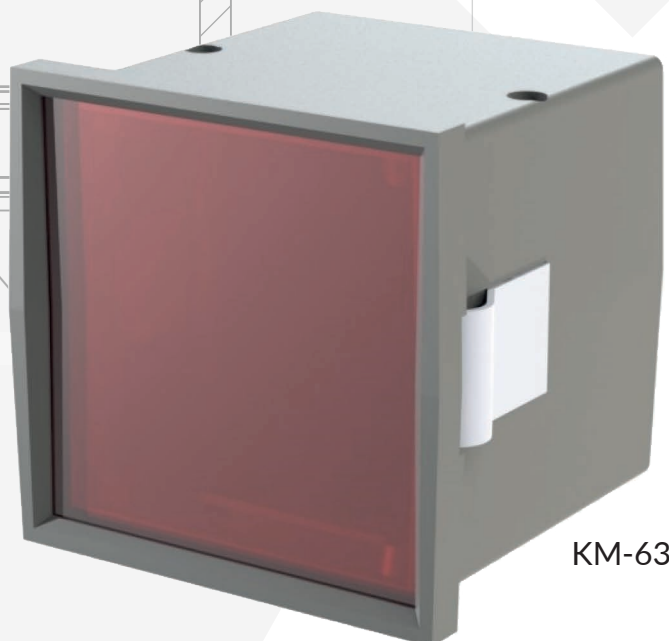


## BUILT-IN ENCLOSURES

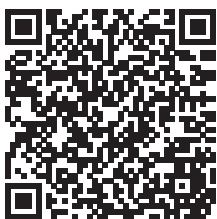
Casings are made of ABS material and RAL 9004, RAL 7035 colour in standard. Built-in casings can be manufactured of any kind of material and colour on demand. Their shape and mounting element give the opportunity to mount it to different plate boxes. The front panel is prepared for adding membrane keyboards, front foil or transparent filters.



SECTION



KM-63



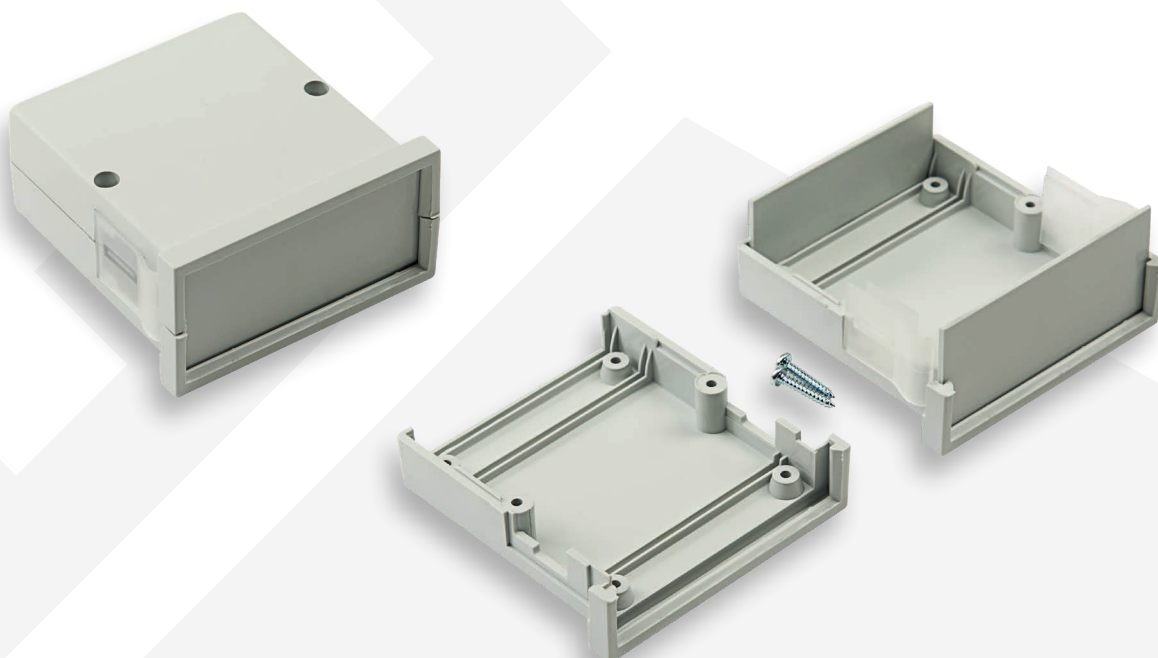
3D view and diagrams available on the website [www.maszcyk.pl](http://www.maszcyk.pl)  
Infoline: +48 602 726 086 / e-mail: [maszcyk@maszcyk.pl](mailto:maszcyk@maszcyk.pl)

## BUILT-IN ENCLOSURES



KM-62

KM-61



ABS material casings. Available in RAL 9004 and RAL 7035 colours. The basis and the cover have integral PCB guides and fastening pins. Front and rear panel included. It has a matte surface finishing. Secured with two screws. Built-in casings also available with transparent panels, in two kind of thickness (PC, PG), suitable for displays, control or measuring systems.

Model	Website	Length	Width	Height	Material	Accessories
KM-64	Unclassified	58	115	36	ABS	S, Fi
KM-61 PC	Series A	72	72	36	ABS	S, Fi
KM-61 PG	Series A	72	72	36	ABS	S, Fi
KM-61 PF	Series A	72	72	36	ABS	S, Fi
KM-62 PC	Series A	72	72	55	ABS	S, Fi
KM-62 PG	Series A	72	72	55	ABS	S, Fi
KM-62 PF	Series A	72	72	55	ABS	S, Fi
KM-63 PC	Series A	72	72	73	ABS	S, Fi
KM-63 PG	Series A	72	72	73	ABS	S, Fi
KM-63 PF	Series A	72	72	73	ABS	S, Fi
Z-114 PC		84	67	67	ABS	S, Fi
Z-114 KP		84	67	67	ABS	S, Fi

Bj - baterie joints  
Bs - baskets for batteries  
Bt - buttons

Cs - cord sleeve  
F - fibers  
Ff - front foil

Fl - filters  
Fo - foot for enclosure  
G - gaskets

Gr - with grounding  
I - insert  
Mk - membrane keyboard

P - plug for screws  
Pi - pins for transformers  
S - screws

So - socket without grounding  
SoGr - socket with grounding  
Sp - plastic screws