







Machine Control and Process Automation

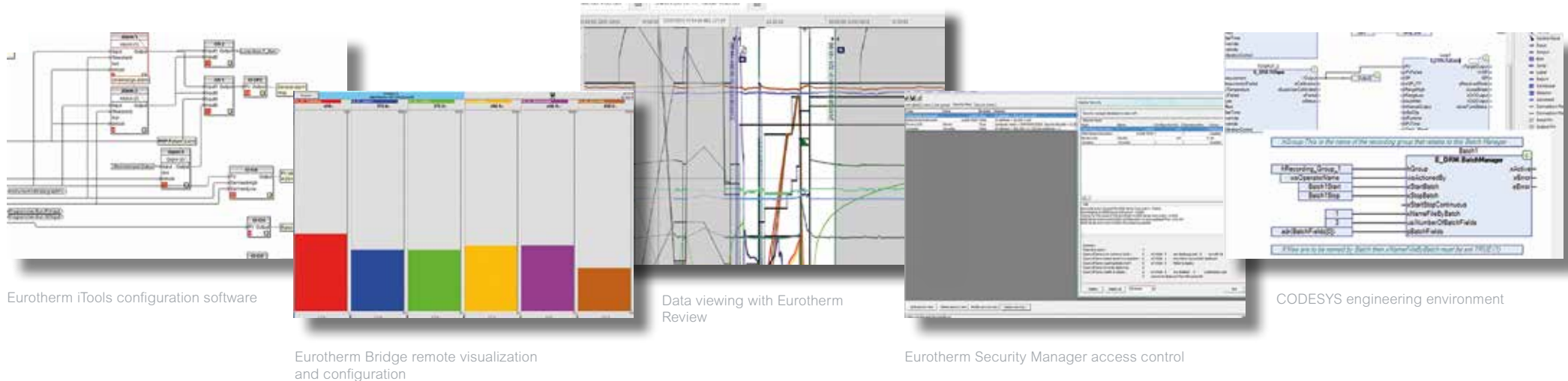
Programmable Automation Controllers	Visual Supervisor		PAC	
				
Features	Eycon™ 10	Eycon™ 20	T2750	T2550
Display Type	5.5" QVGA	12.1" XGA	Remote	
IP Rating	IP65		IP20	
Input Type	Remote		mV, V, mA, T/C, RTD, Potentiometer	
Analog IP/OP	Remote		In: 128 Out: 32	In: 64 Out: 32
Digital IP/OP	Remote		In/Out: 256	In/Out: 128
SP Programmer	8 Channels, 32 Segments each		8 Channels, 32 Segments each	
Batch	✓	✓	✓	—
Recipe	✓	✓	✓	—
Auditor Features	✓	✓	—	—
Control	✓	✓	✓	✓
Data Logging	✓	✓	✓	✓
Ethernet (ELIN)	10/100Mbps		10/100Mbps	
Modbus (Serial & TCP)	Master/Slave		Master/Slave	
Profibus	Master		Master	Slave
Network Addressing	DHCP, Boot P, Link Local, Fixed		DHCP, Boot P, Link Local, Fixed	

Programmable Logic Controllers	Compact PLC	Modular PLC	
			
Features	E+PLC ¹⁰⁰	E+PLC ⁴⁰⁰	
Autotuning PID	✓	✓	
Setpoint Programmer	✓	✓	
Tamper Resistant Recording	✓	✓	
Archiving Strategy	✓	✓	
Batch Management	✓	✓	
Programming Platform	CODESYS (open)		
Programming Languages	IEC61131-3 compliant CFC, FBD, IL, LD, SFC, ST		
Product I/O <small>Dependant on build variant</small>	AI(4), DI (3 max*) DO (2 max*) RLY (3 max*) DC Output (3 max*)	AI2, AI3, AI4, AI8, AO2, DI16, DO16, RLY8, ZI	
I/O Expansion Method	Modbus		
Communications Protocols	FTP, Modbus TCP (Master/Slave), OPC-DA via PC based software	FTP, Modbus TCP (Master/Slave), Modbus Serial RTU (Master/Slave), OPC-DA via PV based software	
Suitable for AMS2750E Process	✓	✓	
Recording Duration (approx) <small>Based on 4 chs at intervals at:</small>	1s 10s 20s 60s	12.97 days 129.7 days 259.45 days 2.13 years	50.5 days 1.28 years 2.77 years 8.3 years
Panel HMI (Protocol)	Built in	E+HMI ¹⁵⁰ (OPC-DA) 07" and 13" size options	
Web Visualization	✓	✓	
Mounting	Panel	DIN	

* Dependent on option board

Eurotherm Product Software

Typical configuration, data reporting, analysis and visualization capability from Eurotherm, and open industry standard IEC61131-3 CODESYS® PLC platform for Eurotherm E+PLC controllers.



Eurotherm iTools configuration software

Eurotherm Bridge remote visualization and configuration

Data viewing with Eurotherm Review

Eurotherm Security Manager access control

CODESYS engineering environment

Configuration software

Eurotherm iTools

One versatile platform for configuration and monitoring of Eurotherm temperature and process controllers, power controllers and recorders.

A complete engineering studio for configuration, data logging, communication and monitoring.

6000 Series software

Eurotherm Bridge

A powerful yet easy to use tool providing visualization and configuration to any Eurotherm 6000 series instrument from any PC anywhere in the world.

With the correct security access, the user can view any number of networked devices using the Local Area Network, intranet or internet.

Data Viewing/Reporting

Eurotherm Data Reviewer

Eurotherm Data Reviewer is a software application designed for the viewing, analysis and printing of historical data files acquired from Eurotherm data acquisition equipment such as, but not limited to: Paperless graphical recorders – 6000 series, hybrid recorders/ controllers – nanodac™ recorder/ controller range and Programmable Automation controllers - T2750 PAC.

Access Control

Security Manager

A common tool across multiple ranges.

Configures:

- 6000 Series Recorder
- Eycon Visual Supervisor
- Operations Viewer
- Eurotherm Review

Combination PLC software

CODESYS®

Eurotherm E+PLC use open industry standard IEC61131-3 CODESYS® PLC platform. This enables simplified engineering through a single integrated programming and visualization development environment which also offers OEM customization and user level access to help safeguard engineering intellectual property.

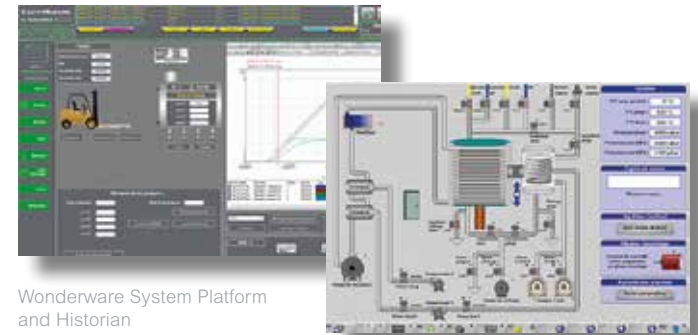
Eurotherm System Software

Everyone talks about connecting the enterprise. Eurotherm® and Wonderware® have been doing it for years with a versatile suite of software tools including Wonderware System Platform and Wonderware PAC software built into our systems which offer:

Configuration tools	Visualization Packages	
<p>Project Studio / Developer</p> <ul style="list-style-type: none"> Engineering tools for process automation Single point configuration Integrated development environment 	<p>Process Viewer</p> <ul style="list-style-type: none"> Low cost HMI Use of iTools Active-X to visualize Eurotherm controllers Contains iTools and EuroMBUS OPC server environment LINtools and LIN OPC Server 	<p>Operation Server and Viewer</p> <ul style="list-style-type: none"> Comprehensive user authorization and tamper resistance via Security Manager Supports Ethernet, ARCnet and serial connections Auditor features meet 21 CFR Part 11

- Reduced engineering effort with autobuild and single project environment
- Powerful graphic tools
- Instant access to data from you plant with online monitoring from any node
- OPC standards inbuilt to I/O drivers
- Built in Security Manager – without making operation and procedures cumbersome
- Built in technologies to meet requirements such as FDA 21 CFR Part 11 and AMS2750E

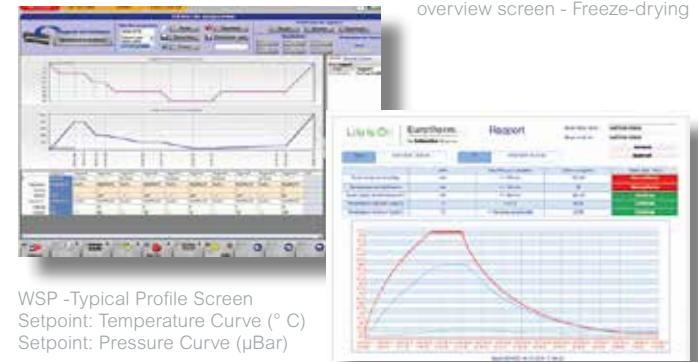
Data Reporting		
<p>Information Manager</p> <p>Provides system connectivity between the Eurotherm control network and the enterprise.</p> <ul style="list-style-type: none"> Captures and stores all plant data all of the time Includes Wonderware Historian software Obtains data from our UHH with our Store & Forward functionality 	<p>Wonderware Historian client</p> <p>Trending and analysis software provides plant data analysis and reporting solutions for Information Manager - giving better managed plant performance.</p>	<p>Dream Report™</p> <p>Integrated reporting solution for industrial automation. Designed to extract data from almost any data source and automatically provide reports to anybody anywhere.</p> <p>Dream Report fits perfectly for both continuous and batch process applications.</p>



Wonderware System Platform and Historian

WSP - Typical process control overview screen - Freeze-drying

Network support	Applications	
<p>OPC Servers and I/O Drivers for:</p> <ul style="list-style-type: none"> Single point configuration Modbus devices / I/O drivers LIN devices Wonderware SuiteLink™ protocol Includes advanced communication diagnostic and monitoring tools. WWPAC is provided to enable integration of PAC instruments into Wonderware System Platform Intellution FIX32 and iFIX 	<p>Security Manager</p> <p>A common security tool across multiple ranges.</p> <p>Configures:</p> <ul style="list-style-type: none"> 6000 Series Recorder Eycon Visual Supervisor Operations Viewer Eurotherm Review 	<p>Eurotherm Control and Application Modules</p> <ul style="list-style-type: none"> Standard supervisory workstation interface Standard library blocks Operator faceplate Engineer point display



WSP -Typical Profile Screen
Setpoint: Temperature Curve (° C)
Setpoint: Pressure Curve (µBar)

Typical Eurotherm Dream Report.
Phases of heat/cool, temperature and setpoint analysis.

For more information and downloads go to your local Eurotherm website > software
Wonderware® is a registered trademark of Schneider Electric