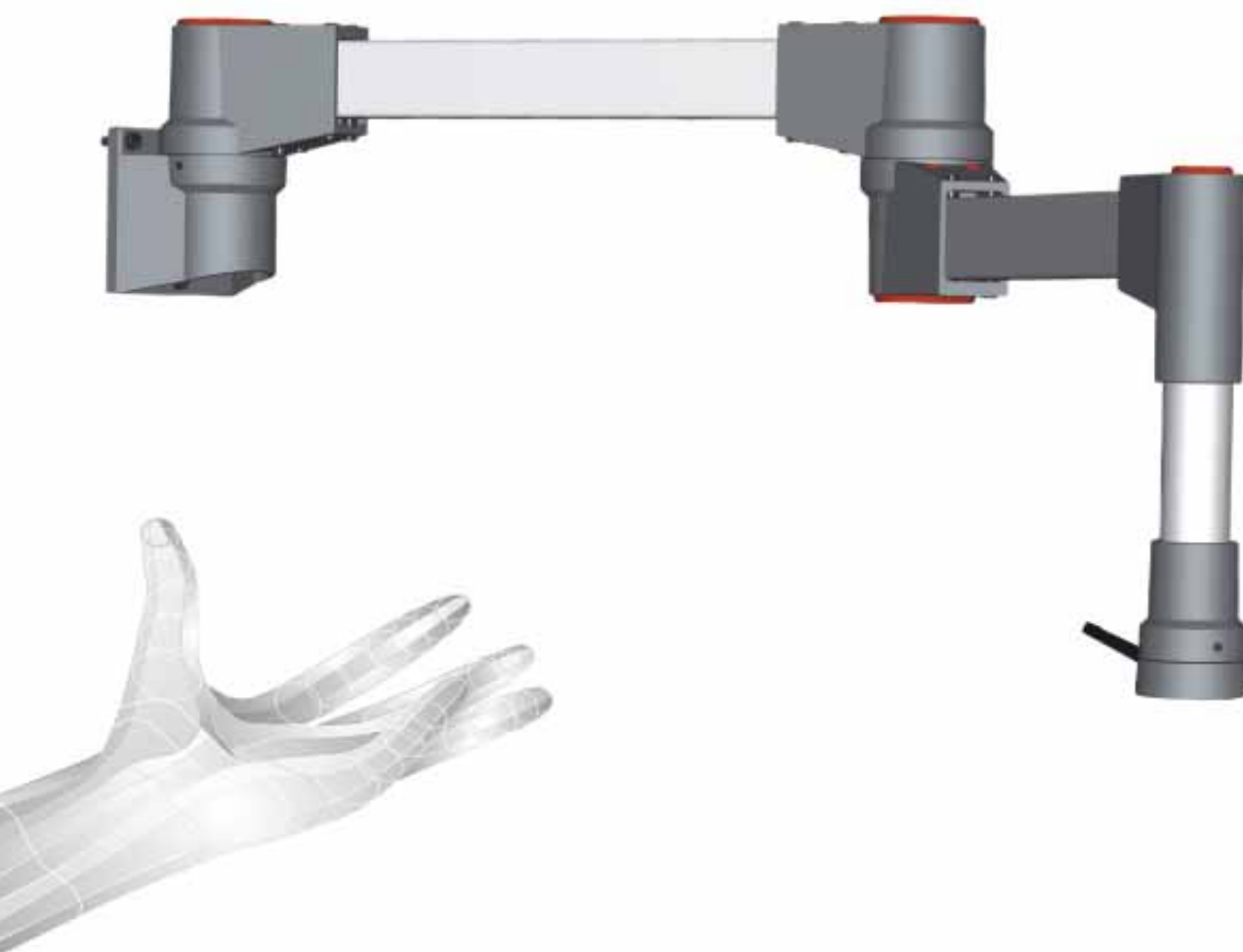


taraPLUS



Variables
Tragarm-System
Variable
suspension-system
Variabel
draagarmsysteem

Multivariables Tragarm-System
 Einfache Installation der Kabel
 Schnelle Ausrichtung des Systems
 Tragarm-System für leichte und mittlere Belastung
 Besonderes Design durch Kombination von Rechteck- und Rundrohr
 Verbesserte Statik
 Schutzart IP 54

*Multivariable suspension-system
 Easy installation of cables
 Fast adjustment of the system
 Suspension-system for light and medium load capacity
 Special design by combining rectangular and round tubes
 Better statics
 Ingress protection up to IP 54 / EN 60529*

Multivariable draagarmsysteem
 Eenvoudige installatie van de kabels
 Snelle afstelling van het systeem
 Draagarmsysteem voor lichte en middelmatige belasting
 Speciaal design door de combinatie van rechthoekige en ronde buis
 Verbeterde statica
 Beschermklasse IP 54

TECHNISCHE DATEN
taraPLUS

Material
 Aluminiumguss Legierung:
 EN AC-44300 DIN EN 1706
 (GD Al Si 12/DIN 1725).
 Rohre: Fe

Oberfläche Systemelemente
 Pulverlackierung
 Fenstergrau RAL 7040.
 Optional: Sonderfarben.

Oberfläche Verbindungsrohre
 Pulverlackierung
 Lichtgrau RAL 7035.
 Optional: Sonderfarben.

Faltenbälge:
 Lichtgrau ähnlich RAL 7035.

Öffnung Kabelführung
 48 mm Rohr = 42 mm Ø
 70 mm Rohr = 62 mm Ø
 60/40 mm Rohr = 54 x 34 mm

Anzugsdrehmoment
 für Schneideringsschrauben
 30 Nm = 3 kg/m

TECHNICAL DATA
taraPLUS

Material
 Die-cast aluminium:
 EN AC-44300 DIN EN 1706
 (GD Al Si 12/DIN 1725)
 Tubes: Fe

Coating systemelements:
 Powder coated
 RAL 7040 window grey.
 Special colours on request.

Coating connecting tubes:
 Powder coated
 RAL 7035 light grey.
 Special colours on request.

Fold protective coverings:
 Similar to RAL 7035 light grey.

Cable routing opening
 48 mm tube = 42 mm Ø
 70 mm tube = 62 mm Ø
 60/40 mm Rohr = 54 x 34 mm

Torque
 for self cutting screws
 30 Nm = 3 kg/m

TECHNISCHE GEGEVENS
taraPLUS

Materiaal
 Gietaluminiumlegering:
 EN AC-44300 DIN EN 1706
 (GD Al Si 12/DIN 1725)
 Buis: Fe

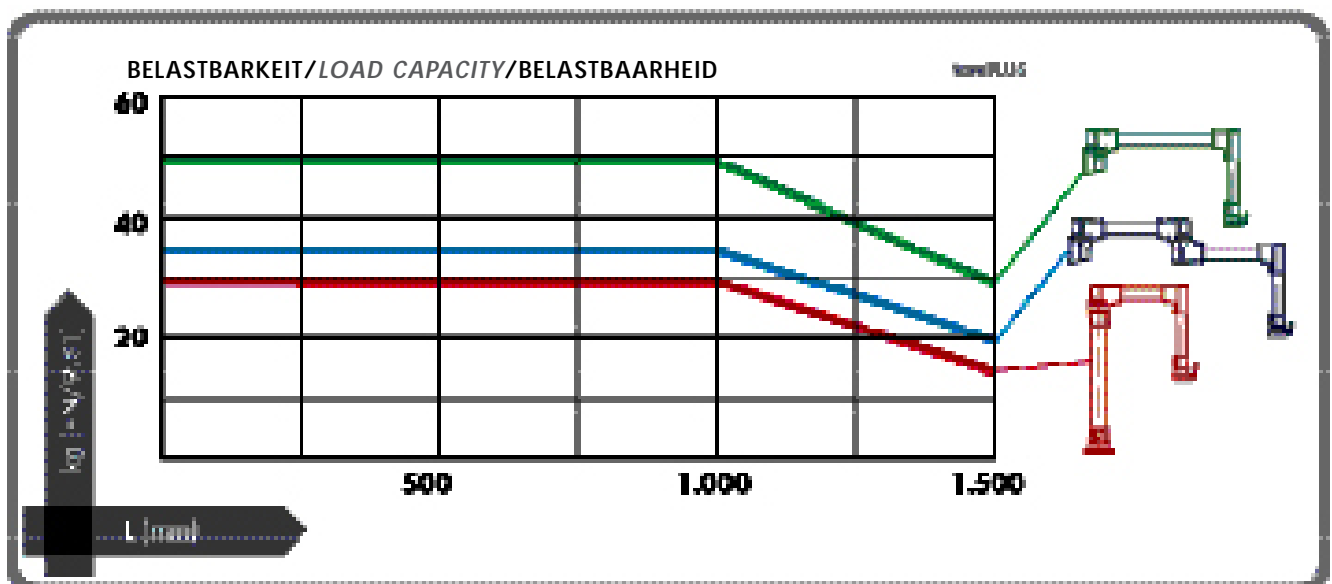
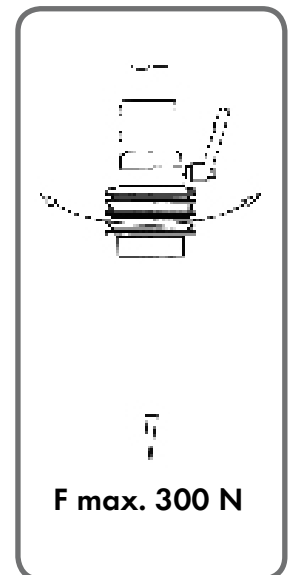
Lak systeemelementen:
 Gemoffeld
 RAL 7040 venstergrijs.
 Speciale kleuren optioneel.

Coating verbindingbuizen:
 Gemoffeld
 RAL 7035 lichtgrijs.
 Speciale kleuren optioneel.

Vouwbalgen:
 Als RAL 7035 lichtgrijs.

Opening kabelgeleiding
 48 mm buis = 42 mm
 70 mm buis = 62 mm
 60/40 mm buis = 54 x 34 mm

Aandraaimoment
 voor zelftappende schroeven
 30 Nm = 3 kg/m

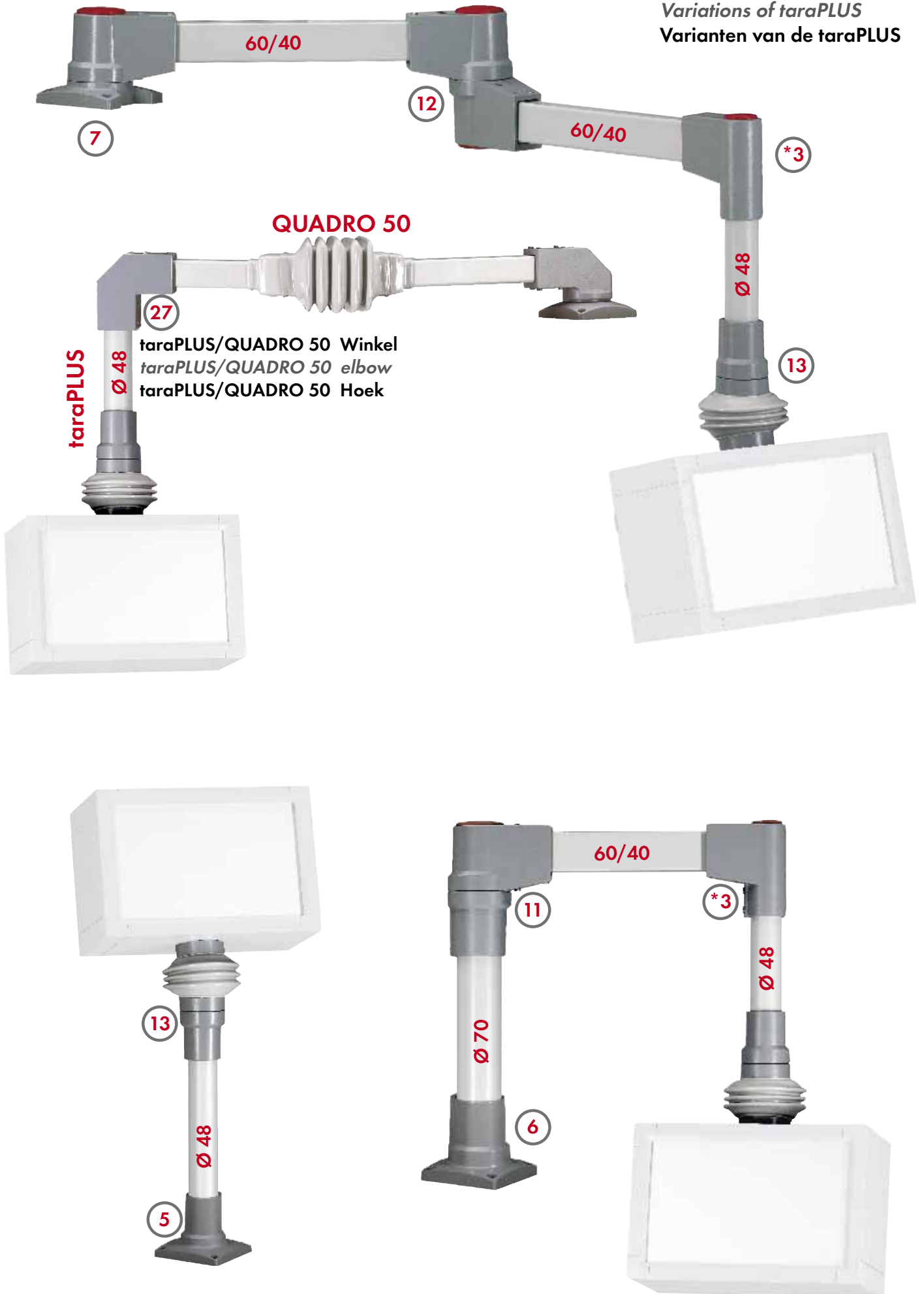


taraPLUS

Variables Tragarm-System
Variable suspension-system
Variabel draagarmsysteem



Varianten von taraPLUS
 Variations of taraPLUS
 Varianten van de taraPLUS



Systemelemente / System elements / Systemelementen

	RAL 7040 ROLEC Mat.-Nr.	RAL 7031 BECKHOFF Mat.-Nr.	Standard-Typ Standard type Standaardtype			g	
1	149.025.000	149.025.010	Drehkupplung	Rotary coupling	Draaikoppeling	700	
2	149.035.000	149.035.010	Drehwinkelkupplung	Elbow rotary coupling	Draaiingshoekkoppeling	1.100	
*3	149.020.000	149.020.010	Winkel 48	Elbow 48	Hoek 48	800	
4	149.020.001	149.020.011	Winkel 70	Elbow 70	Hoek 70	1.800	
5	149.030.000	149.030.010	Standfuss 48	Base 48	Standvoet 48	700	
6	149.030.001	149.030.011	Standfuss 70	Base 70	Standvoet 70	1.150	
7	149.005.000	149.005.010	Aufsatzgelenk	Socket joint	Opzetscharnier	2.450	
8	149.005.001	149.005.011	Aufsatzgelenk senkrecht	Socket joint vertical	Opzetscharnier, verticaal	1.700	
9	149.010.000	149.010.010	Wandgelenk	Wall joint	Wandscharnier	2.750	
10	149.010.001	149.010.011	Wandgelenk senkrecht	Wall joint vertical	Wandscharnier, verticaal	2.000	
11	149.040.000	149.040.010	Aufsteckgelenk	Tube rotation joint	Opsteekscharnier	2.300	
12	149.015.000	149.015.010	Zwischengelenk	Intermediate joint	Tussenscharnier	3.000	
13	149.025.001	149.025.011	Drehneigungskupplung	Inclination rotary coupling	Inclinatiekoppeling	1.350	
14	149.035.001	149.035.011	Drehneigungswinkelkupplung	Inclination elbow rotary coupling	Inclinatiehoekkoppeling	1.800	
15	149.025.002	149.025.012	Drehpultkupplung	Console rotary coupling	Consolekoppeling	1.050	
16	149.025.003	149.025.013	Drehneigungspultkupplung	Console inclination rotary coupling	Console-inclinatiekoppeling	2.150	
17	149.025.004	149.025.014	Drehneigungspultkupplung hängend	Console inclination rot. coupling hanging	Console-inclinatiekoppeling, hang.	2.150	
18	149.035.002	149.035.012	Drehpultwinkelkupplung	Console elbow rotary coupling	Consolehoekkoppeling	1.500	
19	149.035.003	149.035.013	Drehneigungspultwinkelkupplung	Console inclination elbow rotary coupling	Console-inclinatiehoekkoppeling	2.600	
20	149.035.005	149.035.015	Drehneigungspultwinkelkupplung häng.	Console inclination elbow r. coupling hang.	Console-inclinatiehoekkoppeling, hang.	2.600	
27	149.021.000	149.021.010	taraPLUS/QUADRO 50 Winkel	taraPLUS/QUADRO 50 Elbow	taraPLUS/QUADRO 50 hoek	1.480	
28	149.045.000	149.045.010	Wand-Neigungskupplung	Wall inclination coupling	Wand-inclinatiekoppeling	3.500	
		RAL 7031 BECKHOFF Mat.-Nr.	Sonder-Typ für BECKHOFF-PC's Special type for BECKHOFF-PC's Speciaal type voor BECKHOFF-PC's			g	
22	146.025.008	146.025.011	Drehkupplung (4xM6)	Rotary coupling (4xM6)	Draaikoppeling (4xM6)	300	
23	146.025.024	146.025.016	Drehkupplung (4x5,3)	Rotary coupling (4x5,3)	Draaikoppeling (4x5,3)	250	
24	146.010.114	146.010.112	Rückwandadaption	Backside adaption	Achterwandaanpassing	900	
25	146.025.009	146.025.019	Tragarmadaption	Adaption for suspension system	Draagarmaanpassing	500	
	RAL 7035 ROLEC Mat.-Nr.	RAL 9006 BECKHOFF Mat.-Nr.	Rohre Tubes Buis			g	
21	144.300.250	26*	144.330.250	Rundrohr 48 - 0,25 m	Round tube 48 - 0,25 m	Ronde buis 48 - 0,25 m	900
21	144.300.500	26*	144.330.500	Rundrohr 48 - 0,50 m	Round tube 48 - 0,50 m	Ronde buis 48 - 0,50 m	1.800
21	144.300.750	26*	144.330.750	Rundrohr 48 - 0,75 m	Round tube 48 - 0,75 m	Ronde buis 48 - 0,75 m	2.700
21	144.301.000	26*	144.331.000	Rundrohr 48 - 1,00 m	Round tube 48 - 1,00 m	Ronde buis 48 - 1,00 m	3.600
21	144.320.250	21	144.340.250	Rundrohr 70 - 0,25 m	Round tube 70 - 0,25 m	Ronde buis 70 - 0,25 m	1.750
21	144.320.500	21	144.340.500	Rundrohr 70 - 0,50 m	Round tube 70 - 0,50 m	Ronde buis 70 - 0,50 m	3.450
21	144.321.000	21	144.341.000	Rundrohr 70 - 1,00 m	Round tube 70 - 1,00 m	Ronde buis 70 - 1,00 m	6.900
21	144.321.500	21	144.341.500	Rundrohr 70 - 1,50 m	Round tube 70 - 1,50 m	Ronde buis 70 - 1,50 m	10.300
21	144.322.000	21	144.342.000	Rundrohr 70 - 2,00 m	Round tube 70 - 2,00 m	Ronde buis 70 - 2,00 m	13.800
21	144.310.500	21	144.350.500	Rechteckrohr 60/40 - 0,50 m	Rectangular tube 60/40 - 0,50 m	Rechthoekige buis 60/40 - 0,50 m	2.150
21	144.310.750	21	144.350.750	Rechteckrohr 60/40 - 0,75 m	Rectangular tube 60/40 - 0,75 m	Rechthoekige buis 60/40 - 0,75 m	3.200
21	144.311.000	21	144.351.000	Rechteckrohr 60/40 - 1,00 m	Rectangular tube 60/40 - 1,00 m	Rechthoekige buis 60/40 - 1,00 m	4.300
21	144.311.500	21	144.351.500	Rechteckrohr 60/40 - 1,50 m	Rectangular tube 60/40 - 1,50 m	Rechthoekige buis 60/40 - 1,50 m	6.400

▲
Abbildung Nr. auf den folgenden Seiten
Picture nr. on following pages
Afbeeldingnr. op de volgende pagina's

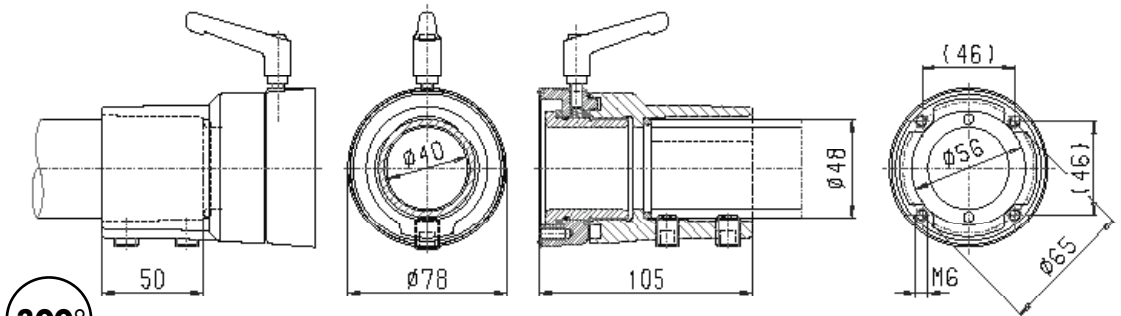
* Winkel 48 (Bild3/Pos. 3) nur zur Gehäuseanbindung an waagrechtes Rechteckrohr 60/40 mm!
Elbow 48 (Pic. 3/Pos. 3) only for connection of enclosure to horizontal rectangular tube 60/40 mm!
Hoek 48 (afbeelding 3/pos. 3) alleen voor behuizingsverbinding met horizontale rechthoekige buis 60/40 mm

26* Rundrohr 48 (Bild26/Seite 212) BECKHOFF Sonder-Typ
Round tube 48 (Pic. 26/page 212) BECKHOFF special type
Ronde buis 48 (afbeelding 26/pagina 212) BECKHOFF speciaal type

taraPLUS

Drehkupplung
Coupling
Draaikoppeling

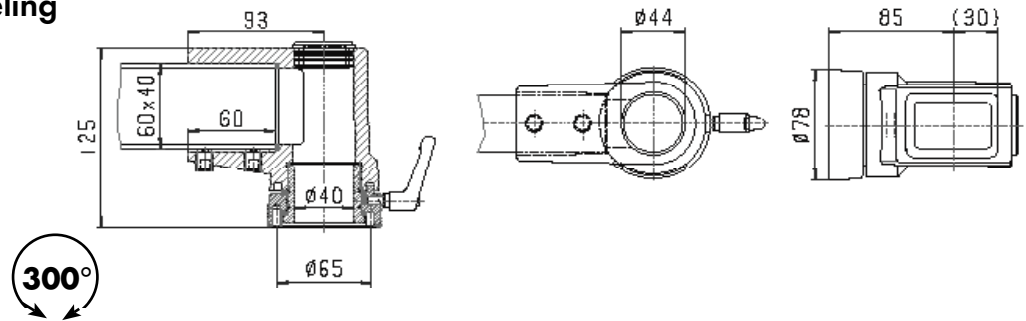
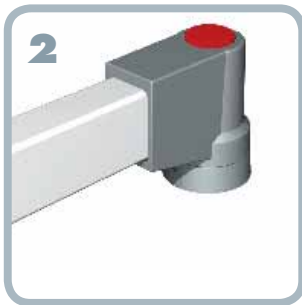
149.025.000



700 g

Drehwinkelkupplung
Elbow coupling
Draaiingshoekkoppeling

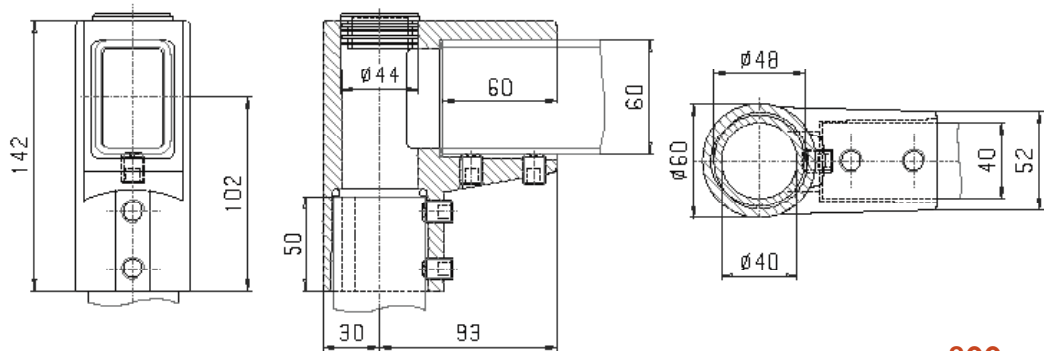
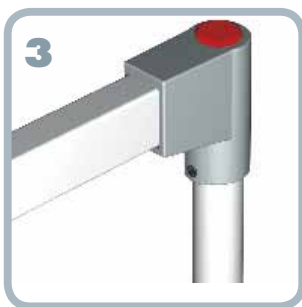
149.035.000



1.100 g

Winkel 48
Elbow 48
Hoek 48

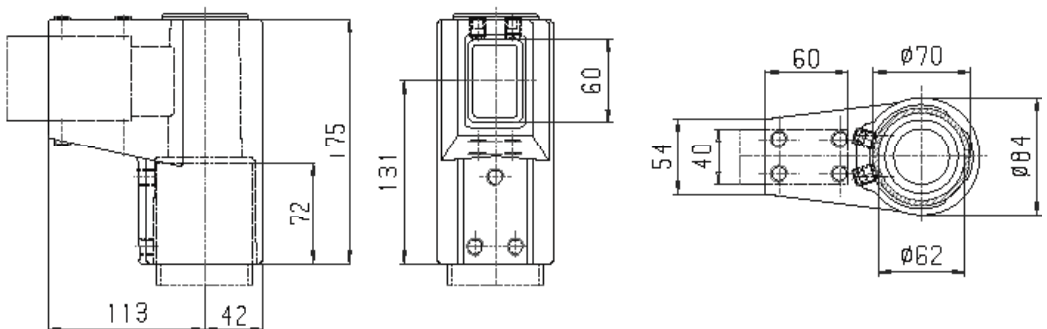
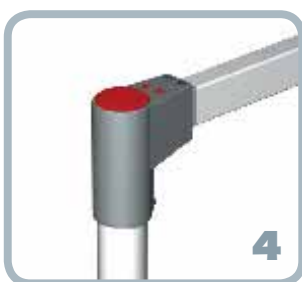
149.020.000



800 g

Winkel 70
Elbow 70
Hoek 70

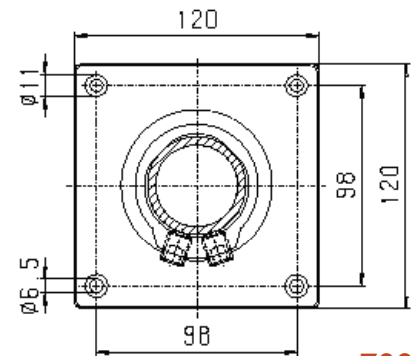
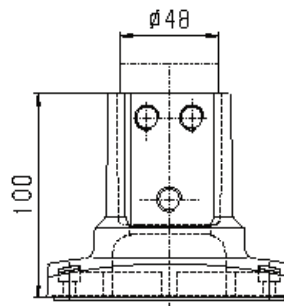
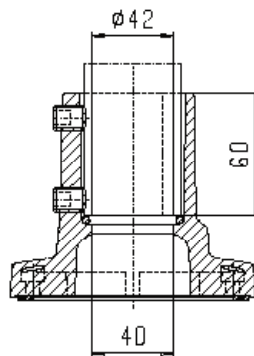
149.020.001



1.800 g

Standfuss 48
Base 48
Standvoet 48

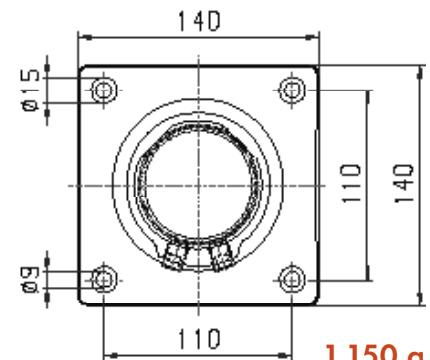
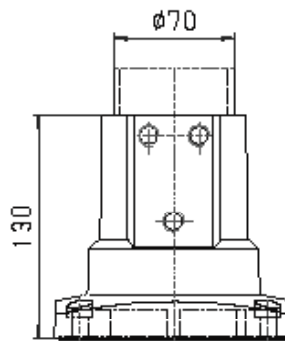
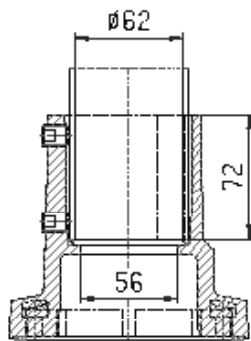
149.030.000



700 g

Standfuss 70
Base 70
Standvoet 70

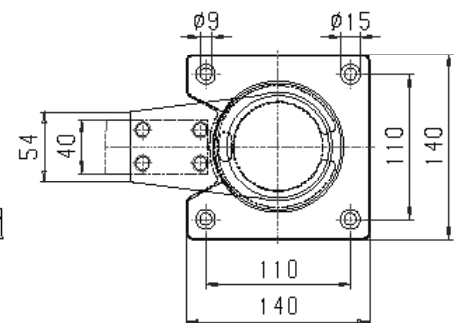
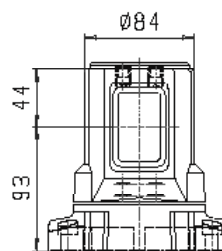
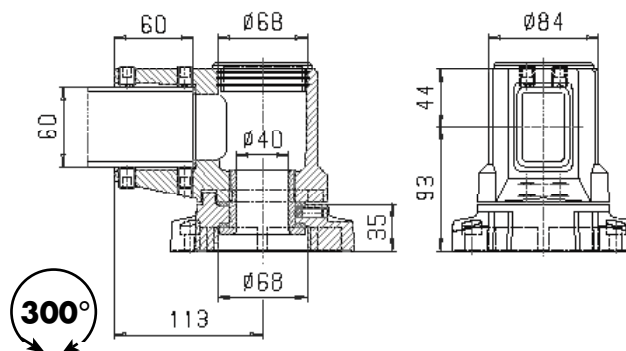
149.030.001



1.150 g

Aufsatzgelenk
Socket joint
Opzetscharnier

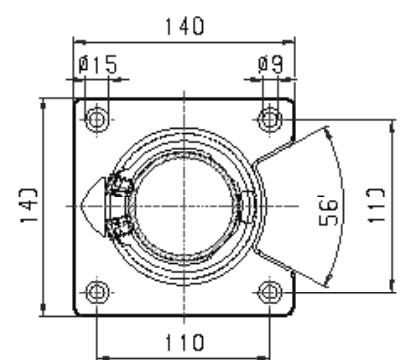
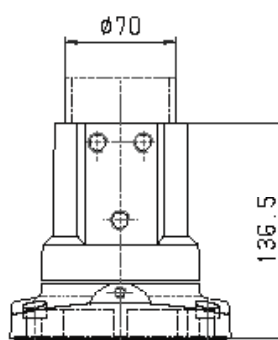
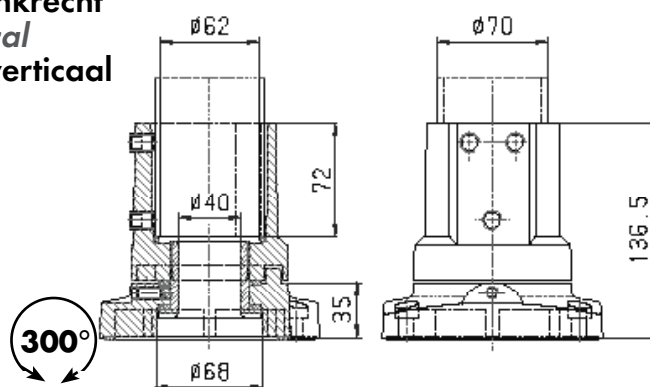
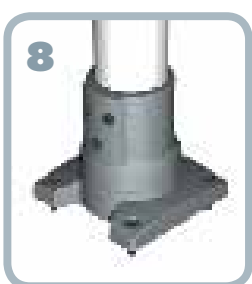
149.005.000



2.450 g

Aufsatzgelenk senkrecht
Socket joint vertical
Opzetscharnier, verticaal

149.005.001



1.700 g

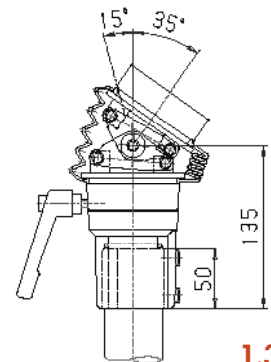
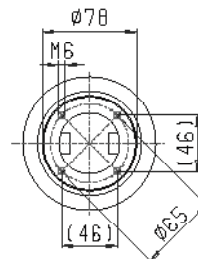
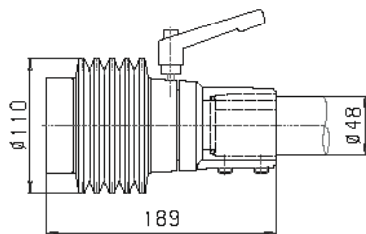
Drehneigungskupplung
Inclination coupling
Inclinatiekoppeling

149.025.001



13

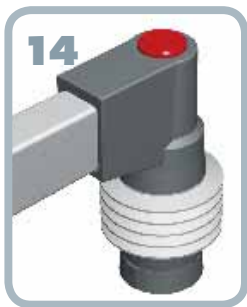
300°



1.350 g

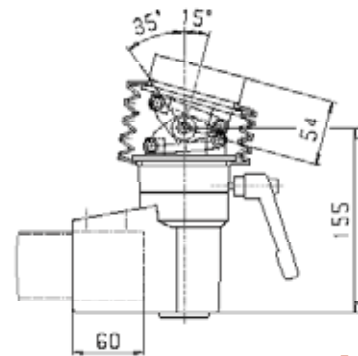
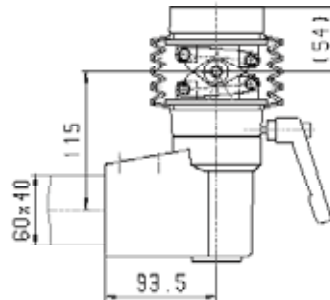
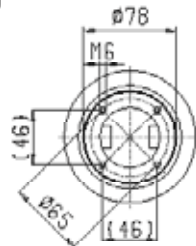
Drehneigungswinkelkupplung
Inclination elbow coupling
Inclatiehoekkoppeling

149.035.001



14

300°



1.800 g

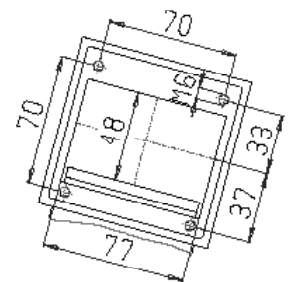
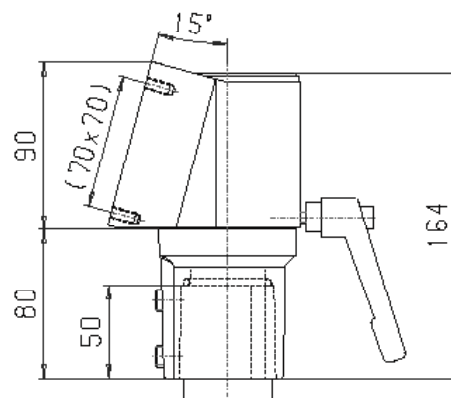
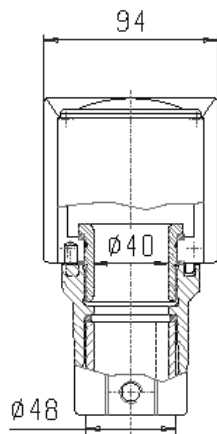
Drehpultkupplung
Console coupling
Consolekoppeling

149.025.002



15

300°



1.050 g

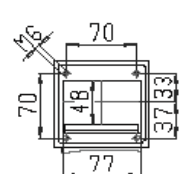
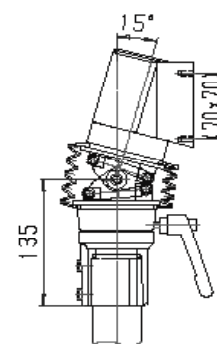
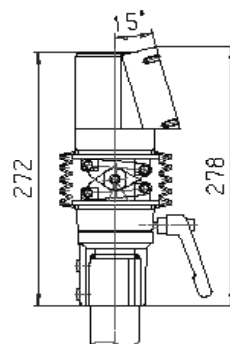
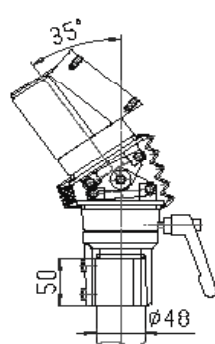
Drehneigungspultkupplung
Console inclination coupling
Console-inclinatiekoppeling

149.025.003



16

300°



2.150 g

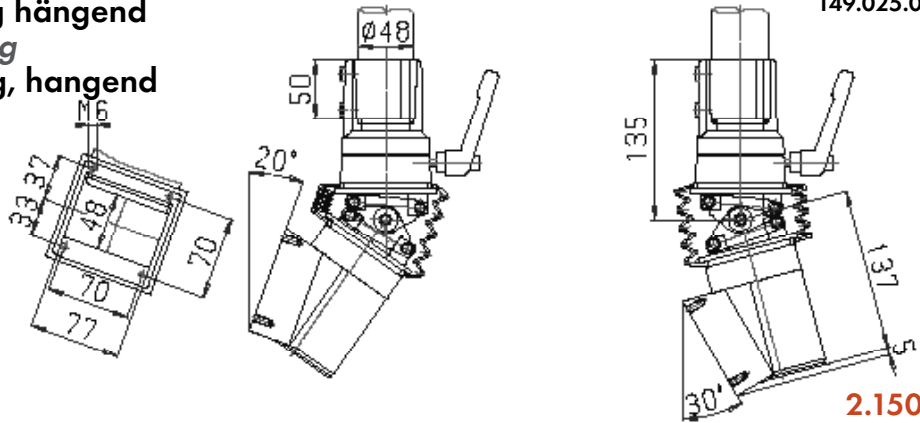
taraPLUS

Drehneigungspultkupplung hängend
Console inclination coupling
Console-inclinatiekoppeling, hangend

149.025.004



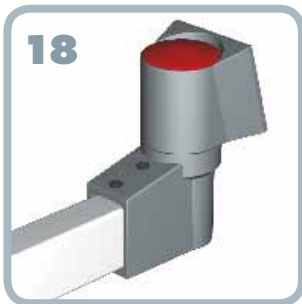
17
 300°



2.150 g

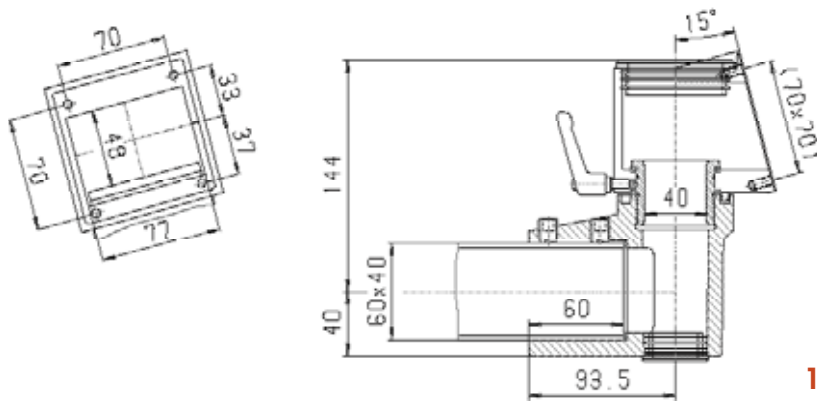
Drehpultwinkelkupplung
Console elbow coupling
Consolehoekkoppeling

149.035.002



18

300°



1.500 g

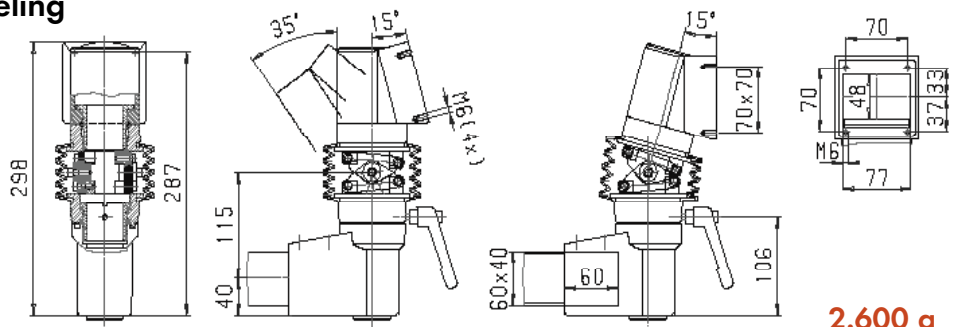
Drehneigungspultwinkelkupplung
Console inclination elbow coupling
Console-inclinatiehoekkoppeling

149.035.003



19

300°



2.600 g

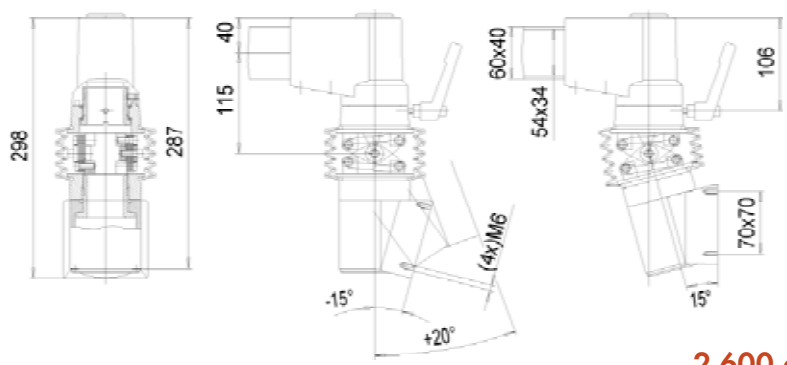
Drehneigungspultwinkelkupplung hängend
Console inclination elbow coupling
Console-incl.-hoekkopp., hangend

149.035.005



20

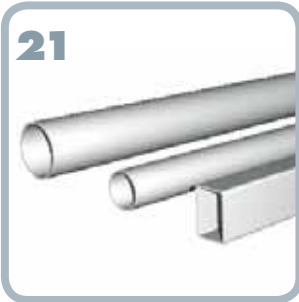
300°



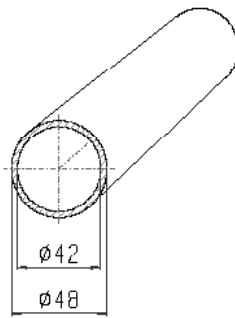
2.600 g

Rohre
Tubes
Buizen

21

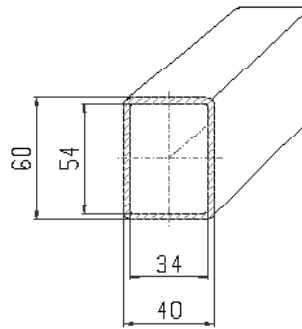


144.30x.xxx



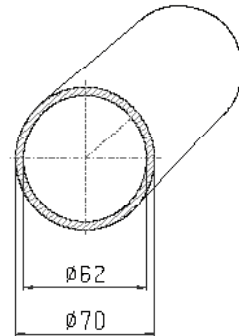
1,00 m = 3.600 g

144.31x.xxx



1,00 m = 4.300 g

144.32x.xxx

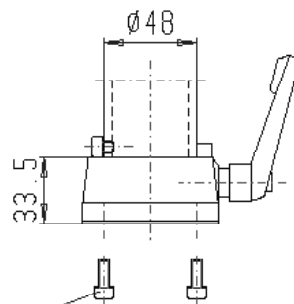


1,00 m = 6.900 g

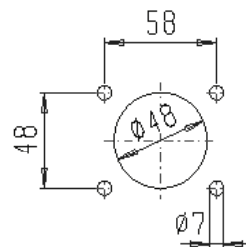
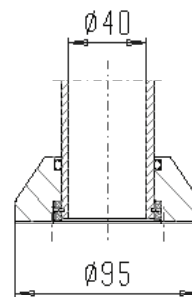
Drehkupplung
Rotary coupling
Draaikoppeling

146.025.008

22



M6x16
DIN 912

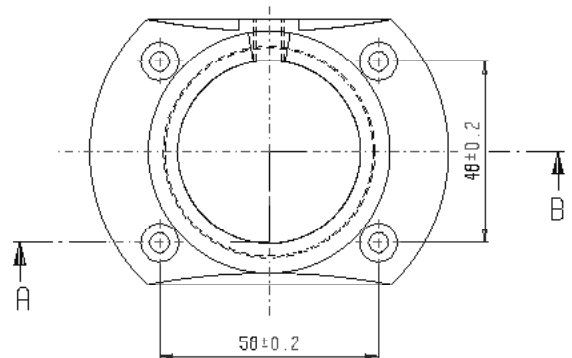
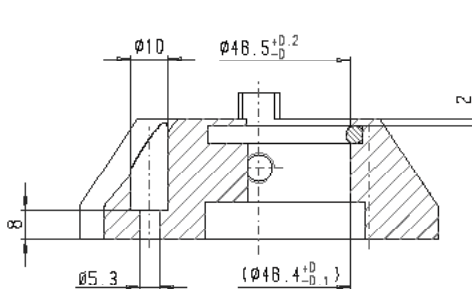


300 g

Drehkupplung
Rotary coupling
Draaikoppeling

146.025.024

23

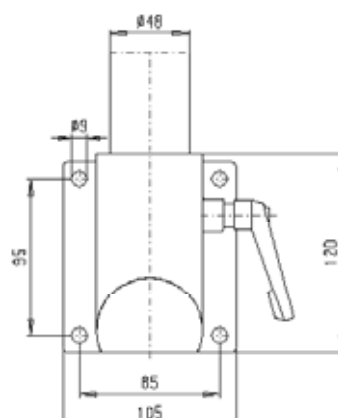
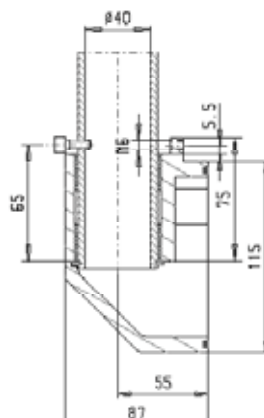


250 g

Rückwandadaption
Backside adaption
Achterwandaanpassing

146.010.114

24



900 g

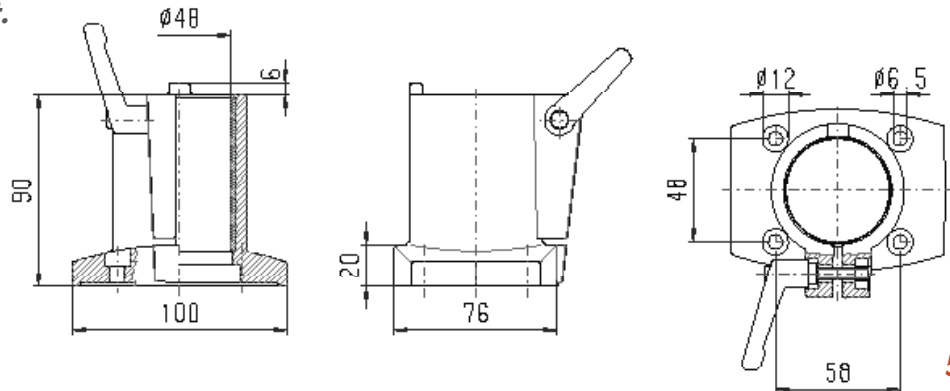
taraPLUS

Tragarmadaption
Adaption for susp. syst.
Draagarmaanpassing

146.025.009



25



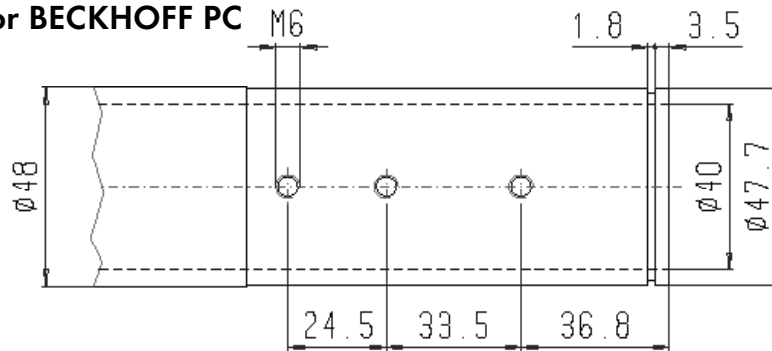
500 g

Sonderrohr Ø 48 für BECKHOFF-PC
Special tube Ø 48 for BECKHOFF-PC
Speciaal buis Ø 48 voor BECKHOFF PC

144.33x.xxx



26



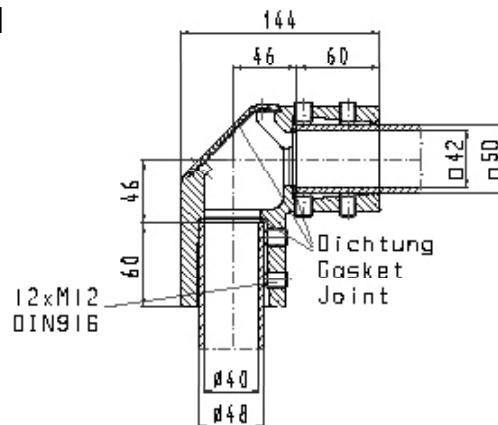
1m = 3.600 g

taraPLUS/QUADRO 50 Winkel
taraPLUS/QUADRO 50 elbow
taraPLUS/QUADRO 50 Hoek

149.021.000



27



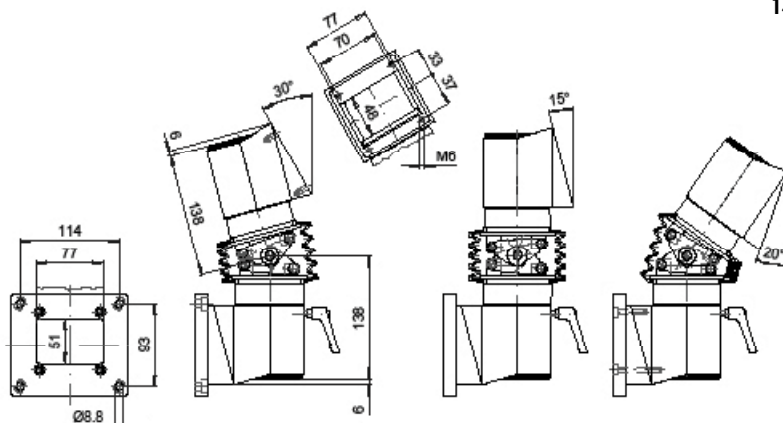
1.480 g

Wand-Neigungskupplung
Wall inclination coupling
Wand-inclinatiekoppeling

149.045.000



28



3.500 g